

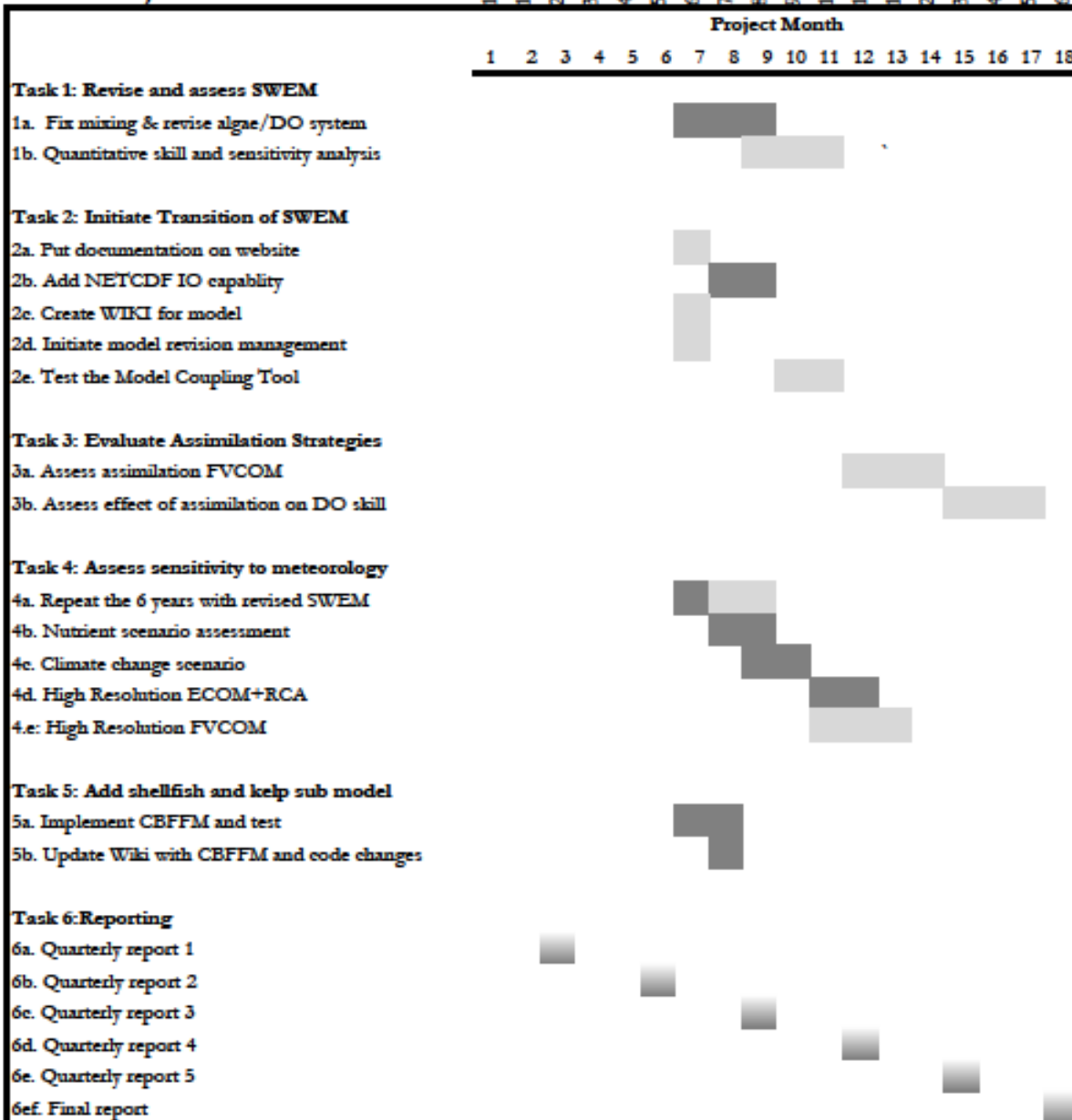
New Project

Table 1. Environmental Outputs/Outcomes

Project Element	Task	Target Date	Environmental Output	Environmental Outcome
1. Revise and Assess SWEM	1a	Month 4	A eutrophication model that hydrodynamically and biogeochemically consistent	Provide manager with an improved tool for decision making
	1b	Month 9		
2. Initiate Transition of SWEM to Community Model	2a	Month 2	Internet accessible community model framework	Accelerate development of a scientifically review and tested water quality prediction system
	2b	Month 4		
	2c	Month 2		
	2d	Month 2		
	2e	Month 12		
3. Evaluate Assimilation Strategies	3a	Month 15	A report with recommendations on the DO prediction skill improvement expected by data assimilation	Better information for managers with which to direct resources for model and observation technology investment
	3b	Month 18		
4. Assess Sensitivity to meteorology	4a	Month 9	A report on the evaluation of the model systems ability to resolve observed interannual variation in hypoxia extent and duration	An assessment of the reliability of the model
	4b	Month 11		
	4c	Month 12		
	4d	Month 14		
	4e	Month 15		
5. Add Shellfish and Kelp submodel	5a	Month 6	A model that simulates influence of benthic plants and animals on water quality	An assessment tool for potential remediation strategies
	5b	Month 6		
6. Reporting	6a	Month 2	5 Quarterly Technical reports and a Final Report; web site and model, data and prediction distribution system	An improved model with quantitative skill assessment and broad access to the system.
	6b	Month 4		
	6c	Month 7		
	6d	Month 10		
	6e	Month 13		
	6f	Month 15		
	6g	Month 19		

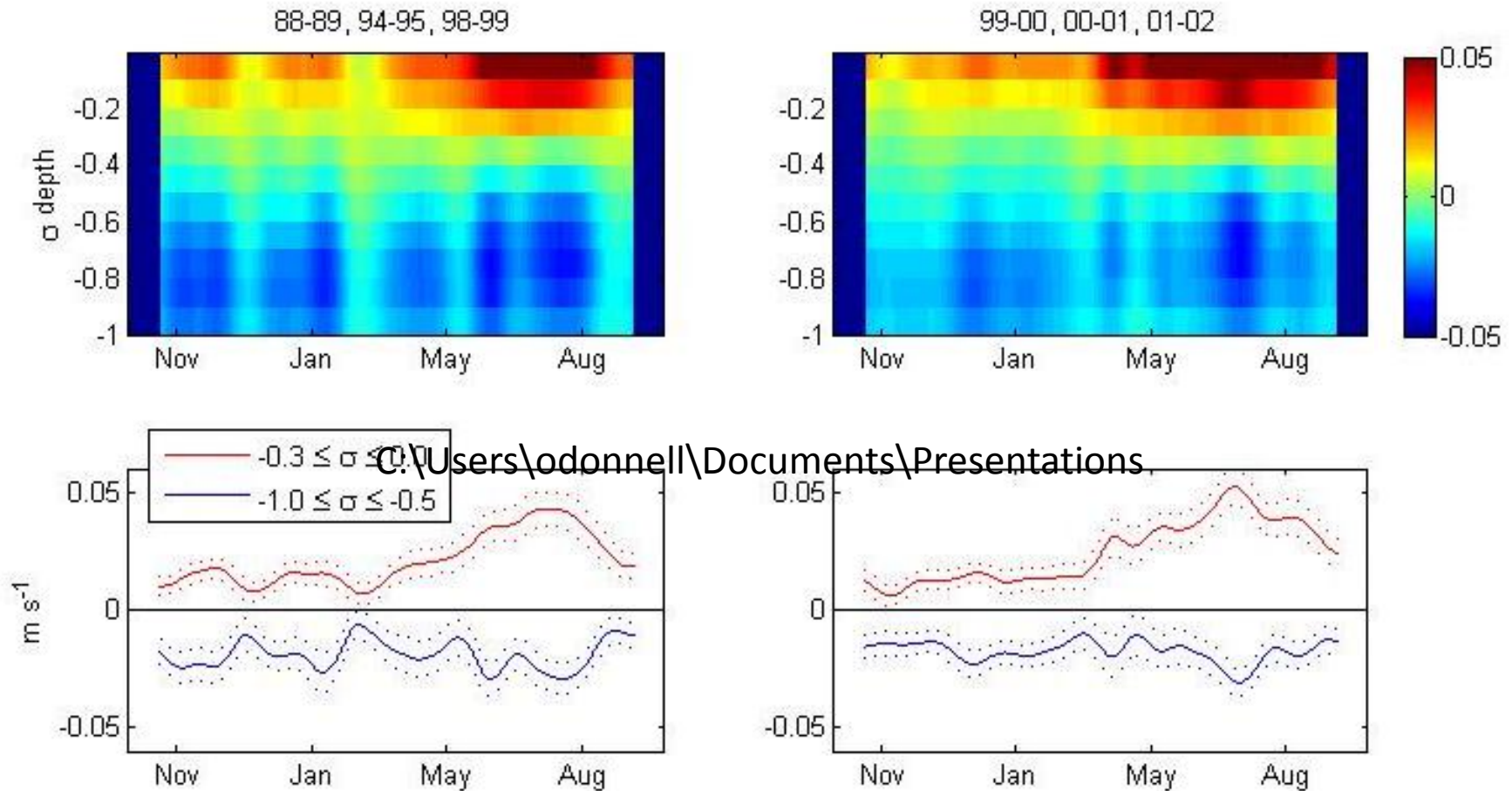
Revised Project Schedule

12/28/2011
1/31/2012
2/28/2012
3/31/2012
4/31/2012
5/31/2012
6/30/2012
7/31/2012
8/31/2012
9/31/2012
10/31/2012
11/31/2012
12/31/2012
2/31/2013
3/31/2013
4/31/2013
5/31/2013
6/31/2013



Shading Code

ECOM circulation means for EXRK, FB02, WLIS, & CLIS locations



30-day low-pass filtered along-channel velocity means for the 3 pre-2000 years (left-hand plots) and 3 post-2000 years (right-hand plots) from ECOM at the four ADCP locations shown in the previous plots. The bottom plots show the means and standard errors of the means for the upper 3 (red) and lower 5 (blue) sigma levels. Positive values are out-of-Sound